

### Polka Bognolaise 1

Musical score for Polka Bognolaise 1, 2/4 time signature. The score consists of three staves. The first staff contains the main melody. The second staff features a first ending (marked '1') and a second ending (marked '2'). The third staff concludes the piece with a final cadence.

### Polka Bognolaise 2

Musical score for Polka Bognolaise 2, 2/4 time signature. The score consists of three staves. The first staff contains the main melody. The second staff features a first ending (marked '1') and a second ending (marked '2'). The third staff concludes the piece with a final cadence.

### Hanter-Dro klamm #1

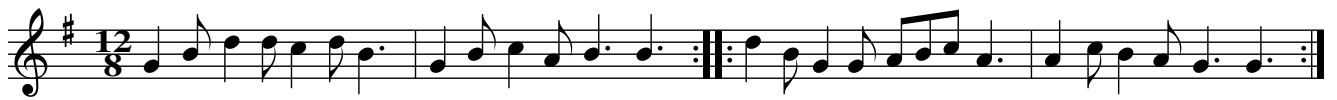
(Bretagne)

Musical score for Hanter-Dro klamm #1, 3/2 time signature. The score consists of two staves. The first staff contains the main melody with a first ending (marked '1') and a second ending (marked '2'). The second staff features a complex rhythmic pattern with changes in time signature (2/2 and 3/2).

### Hanter Dro klamm #2

Musical score for Hanter Dro klamm #2, 3/2 time signature. The score consists of two staves. The first staff contains the main melody. The second staff features a complex rhythmic pattern with changes in time signature (2/2 and 3/2).

### Ton Simpl Gavotte #1



### Ton Simpl Gavotte #2



### Bal Gavotte



### Ton Doubl Gavotte #1



### Ton Doubl Gavotte #2



Hanter Dro / An Dro

Musical notation for 'Hanter Dro / An Dro' in 3/2 time. The first staff shows a simple melody. The second staff features a more complex melody with a triplet of eighth notes and two first/second endings.

Nova

Musical notation for 'Nova' in 3/2 time, featuring a complex melody with a triplet of eighth notes.

Ridéé 6

Musical notation for 'Ridéé 6' in 3/2 time, consisting of two staves with first and second endings.

Marboan

Musical notation for 'Marboan' in 4/4 time with a key signature of one sharp (F#). It consists of five staves of music.

Hanter Dro

The first piece, titled "Hanter Dro", is written in 3/4 time. The upper staff begins with a treble clef and a key signature of one sharp (F#). The melody consists of eighth and sixteenth notes. The lower staff starts with a repeat sign and contains a rhythmic accompaniment of eighth and sixteenth notes. Both staves end with a double bar line and repeat dots.

Hanter Dro

The second piece, also titled "Hanter Dro", is in 3/4 time. The upper staff uses a treble clef and a key signature of one sharp (F#). The melody is composed of eighth and sixteenth notes. The lower staff begins with a repeat sign and provides a rhythmic accompaniment of eighth and sixteenth notes. The piece concludes with a double bar line and repeat dots.

Hanter Dro

The third piece, titled "Hanter Dro", is in 3/4 time. The upper staff features a treble clef and a key signature of two sharps (F# and C#). The melody is written with eighth and sixteenth notes. The lower staff starts with a repeat sign and contains a rhythmic accompaniment of eighth and sixteenth notes. The notation ends with a double bar line and repeat dots.

Kas a barh

The piece titled "Kas a barh" is in 2/2 time. The upper staff begins with a treble clef and a key signature of one sharp (F#). The melody includes a first ending bracket labeled "1" and a second ending bracket labeled "2". The lower staff starts with a repeat sign and provides a rhythmic accompaniment of eighth and sixteenth notes. The piece concludes with a double bar line and repeat dots.

Hanter Dro

Two staves of musical notation in 3/2 time. The first staff contains a single melodic line with a repeat sign at the end. The second staff contains a second melodic line, also with a repeat sign at the end.

Hanter Dro

Two staves of musical notation in 3/2 time. The first staff contains a single melodic line with a repeat sign at the end. The second staff contains a second melodic line, also with a repeat sign at the end.

Hanter Dro

Two staves of musical notation in 3/2 time with a key signature of one sharp (F#). The first staff contains a single melodic line. The second staff contains a second melodic line with a repeat sign, followed by a first ending bracket labeled '1' and a second ending bracket labeled '2' with 'D.C.' (Da Capo) written above it.

An Dro "Ur maligorn"

*trad.*

Two staves of musical notation in 2/2 time with a key signature of one sharp (F#). The first staff contains a single melodic line with a repeat sign and a first ending bracket labeled '1'. The second staff contains a second melodic line with a repeat sign and two first ending brackets labeled '1' and '2'.

An Dro

*trad.*

Musical score for 'An Dro' in 2/2 time. The melody is written on a single staff. It begins with a repeat sign. The first ending is marked with a '1' and the second ending with a '2'. The piece concludes with a final double bar line.

An Dro

*trad.*

Musical score for 'An Dro' in 2/2 time with a key signature of one sharp (F#). The melody is written on a single staff. It begins with a repeat sign and ends with a final double bar line.

En Dro Folk

*trad.*

Musical score for 'En Dro Folk' in 4/4 time. The melody is written on a single staff. It begins with a repeat sign. The first ending is marked with a '1'. The piece concludes with a final double bar line.

Tour "Trois jeunes marins"

*trad.*

Musical score for 'Tour "Trois jeunes marins"' in 4/4 time. The melody is written on a single staff. It begins with a repeat sign and ends with a final double bar line.

# Chang'tu

*trad.*

Musical score for 'Chang'tu' in 4/4 time. It consists of three staves of music. The first staff begins with a treble clef and a 4/4 time signature. The second staff starts with a repeat sign. The third staff includes first and second endings, indicated by boxes labeled '1' and '2' above the notes.

# Laride

*trad.*

Musical score for 'Laride' in 4/4 time. It consists of two staves of music. The first staff has a treble clef and a key signature of one sharp (F#). The second staff also has a treble clef and a key signature of one sharp. Both staves feature several triplet markings, indicated by the number '3' above groups of three notes.

# Laride

*trad.*

Musical score for 'Laride' in 4/4 time. It consists of two staves of music. The first staff has a treble clef and a 4/4 time signature. The second staff also has a treble clef and a 4/4 time signature. Both staves feature triplet markings, indicated by the number '3' below groups of three notes.

# Laride

*trad.*

Musical score for 'Laride' in 12/8 time. It consists of two staves of music. The first staff has a treble clef and a 12/8 time signature. The second staff also has a treble clef and a 12/8 time signature. The music is characterized by a steady eighth-note rhythm.